

Flex 8,5m x 10m Setup Instructions

Hi,

Flex Tents can be set up in many ways. There are only 3 main factors that need to be addressed with the needed care. Make sure you and your set up team keep these in mind:

Stakes

A. Driven all the way into solid ground at a 45° angle pointing away from the tent.

B. Side stakes should be set at a distance equal to 75% of the height of the pole used.

B. Corner stakes should be set at a distance equal to the height of the pole. Corners require 2 guy lines – stake them out in line with each the edge of the tent – so they form a 90° angle.

Tension

Even and tight throughout all surfaces and guy lines.

Clamps

A. Orientation: Always attached so the flat side is toward the sky; the Pole fitting and bolts point toward the ground.

B. Attachment: Fix the clamps securely around the elastic rope embedded in the edge of the tent. Feel for stiff reinforced rectangles along the edges – Attach clamps ONLY to reinforced areas. You can't miss them if you're aware you need to look for them.

C. Placement: The MAXIMUM distance between clamps is 3 meters or 10 feet. Adding more clamps at shorter intervals is encouraged and adds stability. Clamps should be symmetrical. Every clamp should have a corresponding clamp on the opposite side of the tent.

D. Double check each clamp to ensure they are well fastened and secure.

You Will Need:

- » 2 People minimum
- » Hammers
- » All Included Parts: Check the product page at CanvasCamp.com to make sure you have everything listed for your specific Flex Tent.
- » Storm Lines (optional) – Good strong rope to throw over the Flex Tent once it's pitched and staked to the ground for additional wind resistance.

Set Up Instructions:

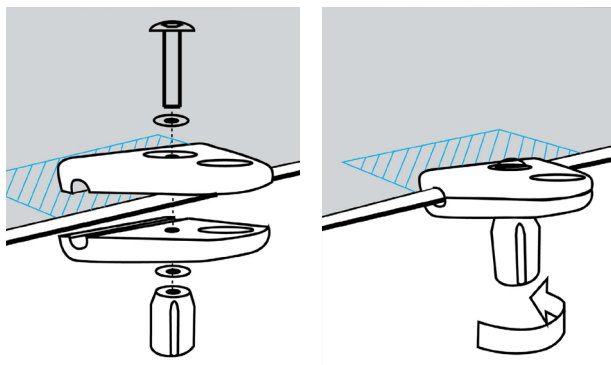
1. Clean your set up area and clear it of sharp objects.
2. Spread out the tent flat on the ground. Make sure the pole insert on the pre-attached corner clamps are facing down toward the ground. The flat side of the corner clamp should face up towards the sky.



3. Attach the side clamps – review the rules above!
4. Assemble the poles to your desired height and lay them out at each clamp position along the perimeter of the tent.
5. Attach one guy line to each side clamp, and two guy ropes to each corner clamp. Guy lines (or tensioning straps) should be least 1,5 meters (5 feet) longer than the pole that will be used at that position.



Flex 8,5m x 10m Setup Instructions



6. Pound in the stakes at a 45° angle, facing away from the tent, to maximize grip. Side stakes should be set at distance equal to 75% of the height of the side pole. Corner stakes should be set at a distance equal to the height of the pole. Corners require 2 guy lines – stake them out in line with each the edge of the tent – so they form a 90° angle.

7. Attach the straps with the tensioning buckles to the pegs but leave the guy ropes very loose.



8. If you're using storm lines: lay them out over the tent fabric. (It's a lot harder throwing them over a pitched tent.) A storm line runs from its peg, along a guy rope, through the side clamp, over the tent, through a side clamp on the opposite side, along a guy rope, to a peg.
9. Push up the Corner Poles and tension the guy lines. The corner poles must remain standing to add the rest of the poles.



10. Push up the side poles. Raise them symmetrically – two at a time – starting from one end of the tent and working toward the other end. Tighten the guy lines softly.



11. Push up the center poles.
12. Tension the guy lines by pulling the loose end of the guy lines through the tensioners. Work symmetrically – as you add tension to one guy line – add tension to the corresponding guy line on the opposite side of the tent. Firm and even tension is the goal. Don't overdo it!



Flex 8,5m x 10m Setup Instructions

13. If you're using Storm Lines – Tension them last and tension them **HARD**. Two strong adults pulling as hard as they can should do it.

You're ready! Enjoy your Flex tent.

Storm Lines

Storm lines can triple the wind resistance of a Flex tent. Storm lines keep the Flex Tent from being lifted by the wind and help keep the center poles in place. CanvasCamp strongly recommends using storm lines when pitching a Flex 80 or larger – or in any environment wind may be prevalent. Storm lines are not included with the purchase of a Flex Tent. They are sold separately, or ropes can be picked up at your local hardware store. Climbing rope, sailing rope, or truck tie rope works great.

Run storm lines over the top of your Flex tent and through the holes in the side clamps to avoid the lines cutting into the canvas. Both ends of the storm lines should be anchored with their own stakes. Check our different setup options to see how we do it.

Think of a Flex tent as a massive sail on a ship. And thus huge forces can occur depending on the size of your tent, the way the tent is angled towards the wind, the meteorological conditions, the chosen pitch, ... In order to keep these forces from lifting up the tent, causing the central poles to fall and the tent to come down, storm lines are installed when needed.

Custom Wood Poles

Aluminium pole sets are available on our website. The optional aluminium poles don't need any preparation and are modular in length. They are easy to ship and store.

* Side poles: slide the round grip on the bottom of the side clamps into the side pole.

* Central poles: fit the rounded 'mushroom' pole caps to the top of the poles in contact with the tent fabric.

Wooden poles. A lot of our customers source their own wooden poles locally. They are widely available on- and off line. Wooden poles are harder to store and ship than aluminum poles. But they are more beautiful, stronger, fit the organic style of the tent better, are easier to attach lights and speaker to, ... We prefer and advise wooden poles for most uses.

In the accessory bag you'll find all the accessories needed in order to be able to use your own wooden pole set without damaging the tent fabric.

* Side poles: drill a 12mm hole into the top of the side poles, remove the black grip from the bottom of the side and corner clamps, retighten the clamps using a hex key and a wrench, now fit the bolt sticking out of the bottom of the side clamp into the drill hole.

* Central poles: screw the adapters, to slide the rounded 'mushroom' pole caps onto, onto the top of the central poles.

When shopping for wooden poles:

- we advise 6cm diameter pine poles for poles measuring < 250cm.

- and 8cm diameter pine poles for measuring 260 to 450cm.



Flex 8,5m x 10m

Setup Instructions

Flex Tent Maintenance and Care

Flex tents can be washed using a garden hose or a pressure washer. When using a pressure washer use your common sense and always keep the nozzle at least 20cm off the fabric. If stubborn stains need to be removed, use a soft sponge or brush and natural soap. Never use products containing alcohols, acetone, thinners or any other kind of solvent.



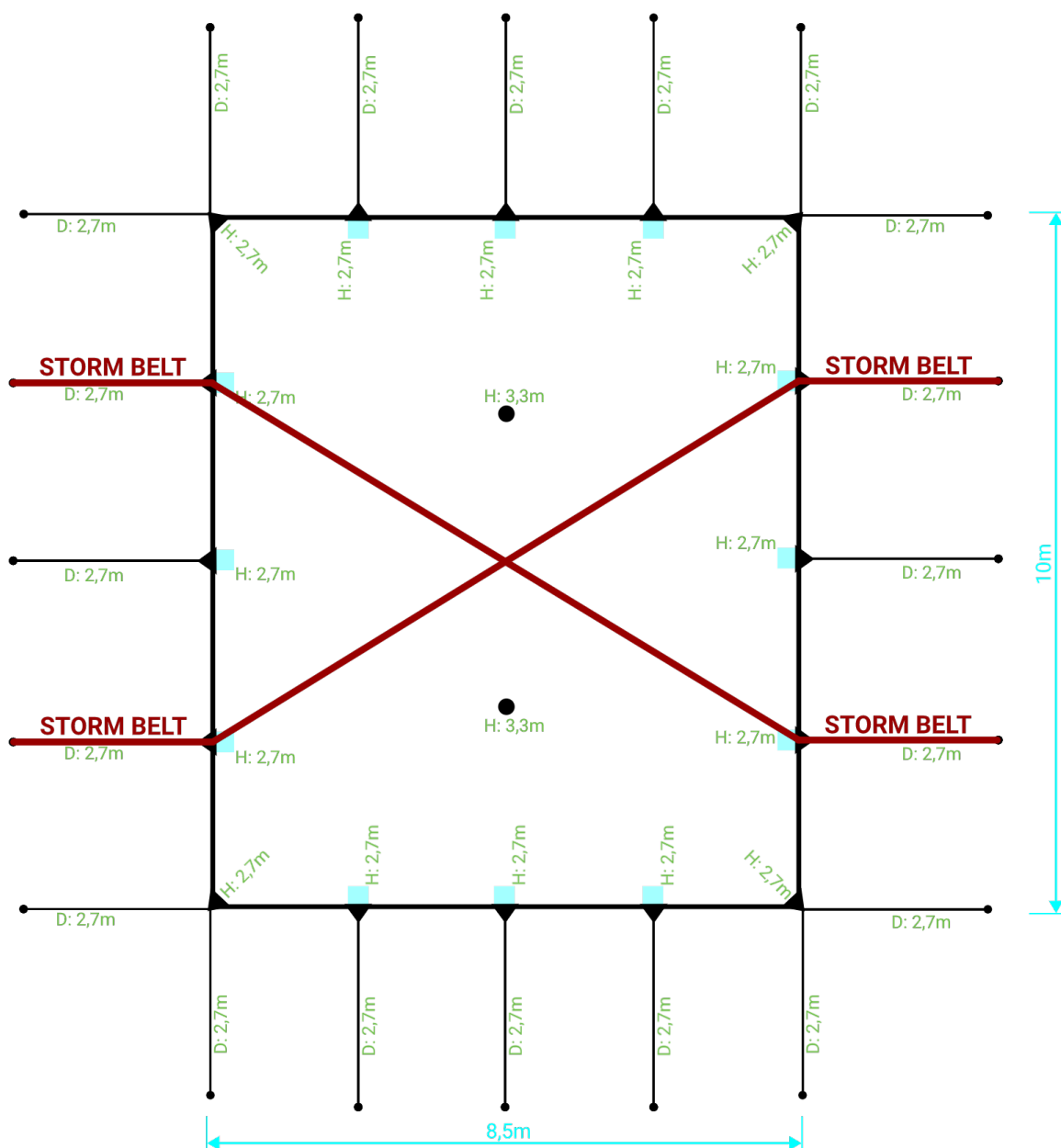
Flex 8,5m x 10m

Setup Instructions

Setup option: 4 sides open



Only use this setup when wind speeds are less than 85kmph (50 mph)

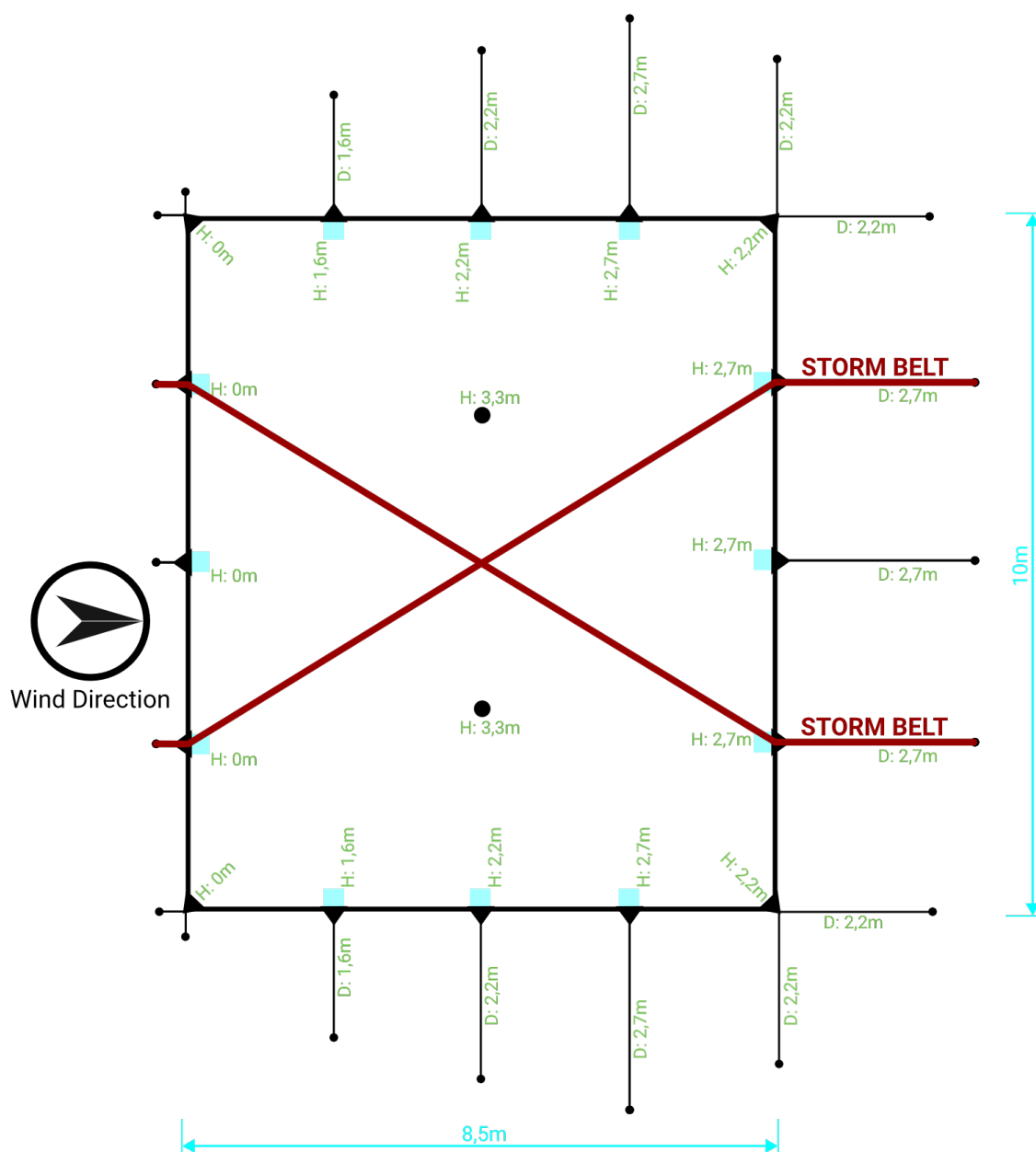


Note: If you decide to close one or more of the sides of the tent, make sure the closed side is pointing into the direction the wind is coming from.

Flex 8,5m x 10m Setup Instructions

Setup option: 3 sides open

! Only use this setup when wind speeds are less than 85kmph (50 mph)



Note: If you decide to close one or more of the sides of the tent, make sure the closed side is pointing into the direction the wind is coming from.